



Water Resistant Laminate Flooring

**PLEASE READ ALL INSTRUCTIONS CAREFULLY BEFORE YOU BEGIN INSTALLATION.
IMPROPER INSTALLATION WILL VOID WARRANTY**

- The entire perimeter of the installation must be sealed with 100% silicone sealant. Please see **Finishing Molding** Section for details.
- Always check panels for defects such as chips and color or sheen differences under good light conditions. Also check that the channel is clean and free of debris.
- Your laminate flooring must be allowed to acclimate to the environment of the installation area. Leave the closed packages in a horizontal position in the room for 72 hours prior to installation. Preferable temperature should be approximately 17°-23°C (62°-73°F) with a relative humidity of 35-55%. Humidity should never be allowed to drop below 30% as this may cause gapping.

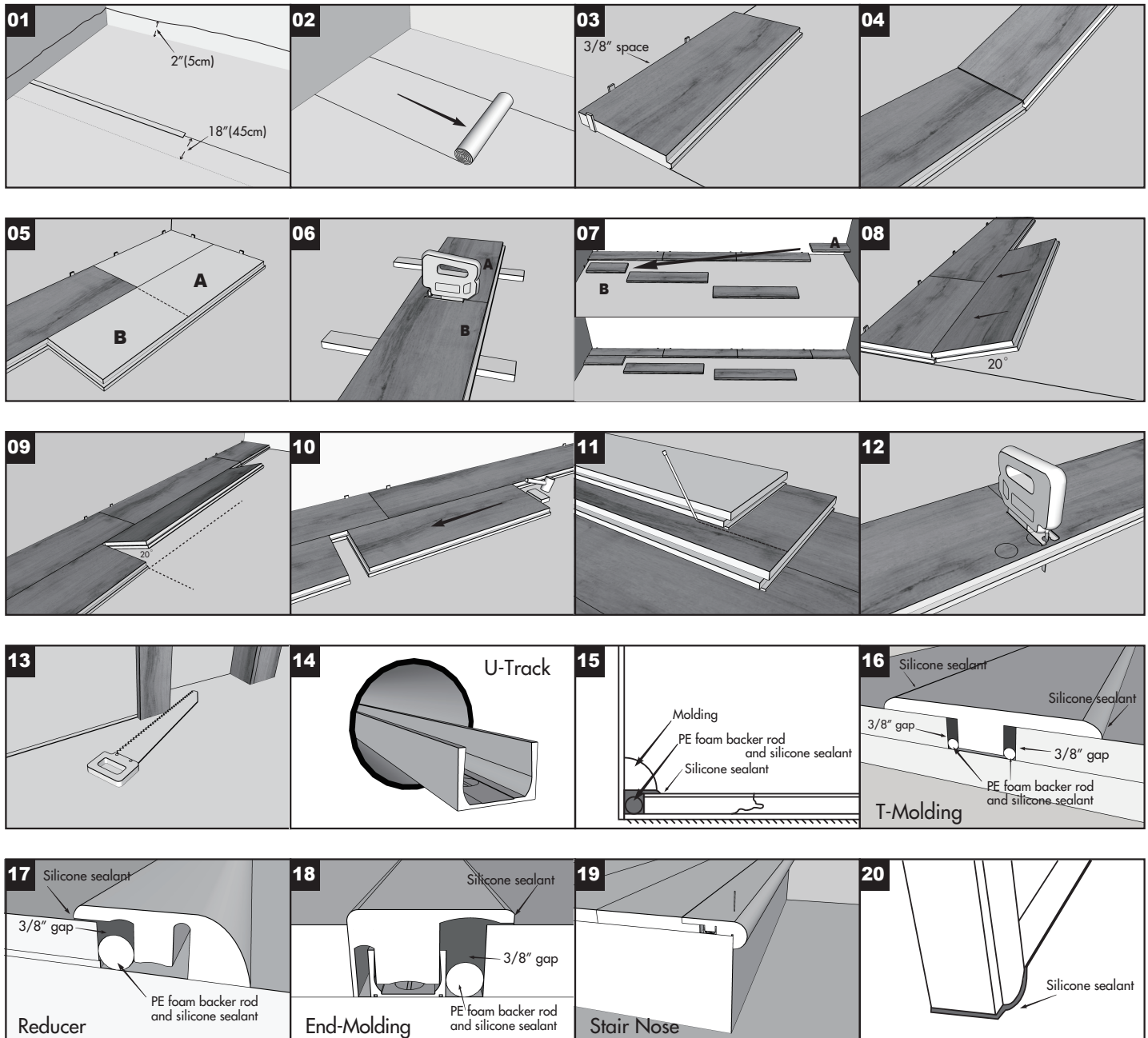
TOOLS AND SUPPLIES REQUIRED ARE:

6 mil polyethylene vapor barrier, (Above your wood or concrete subfloor, you must install a 6 mil polyethylene vapor barrier under your foam underlay.) foam underlay, pressure sensitive polypropylene adhesive tape such as Duck Tape or equivalent, spacers, tapping block, pull bar, saw, hammer, utility knife, pencil, tape measure, ruler, construction adhesive.

SUITABLE TYPES OF SUBFLOORS AND FLOOR PREPARATION

Attention! Without a documented measurement of residual moisture content, a claim against the manufacture for moisture related damages will not be accepted. All subfloors must always be covered with a 6 mil vapor barrier even if PVC, linoleum or resilient vinyl flooring is firmly attached to the concrete.

- The subfloor must be thoroughly level, dry, clean and solid. Carpet staples or glue residue must be removed and the subfloor must be clean to ensure proper installation.
- Hammer a nail into the center of the floor. Tie a string to the nail, Pull the string tight to the farthest corner of the room and examine the floor at eye level for any gaps between the string and floor. Move the string around the perimeter of the room noting any gaps larger than 1/8"(3mm). If the floor is unlevel by more than 1/8"(3mm) per 3'2" (1m), it must be sanded down or filled in with an appropriate filler.
- The water resistant laminate floor can be installed above, on or below grade. A moisture test is **REQUIRED** to determine if high moisture exists in the subfloor. When using a calcium chloride moisture test for concrete subfloors (ASTM F1869), values must be ≤ 5 lbs/1000ft²/24-hr or $<80\%$ RH with an in situ probe (ASTM F2170). Moisture readings of wood subfloors must be $\leq 12\%$.



BASIC INSTALLATION

- For installation on all subfloor, a vapor barrier must be laid down first. Use 6 mil poly. Run the poly 2"(5cm) up walls and overlap seams 18"(45cm). Tape seams. **Diagram 1.**
- All laminate flooring installations require a Underlayment. Run the underlayment in the same direction as the laminate panels. The underlayment should but-up side by side with out overlapping. Then tape the seams together. **Diagram 2.**
- You will need to remove the tongue on the side of the panels that face the wall. This is to ensure that the decorative surface of the laminate floor is well under the finished trim when installed. Use a utility knife to score through the tongue several times until it easily snaps off.
- Start in a corner by placing the first panel with its trimmed side facing the wall. Use spacers along each wall to maintain an expansion space of 3/8"(9.5 mm) between the wall and the flooring. **Diagram 3.**

Remember that this product is primarily wood and needs room to expand and contract. At no point should you attach the floor to any surface. Always leave an expansion space of 3/8" (9.5mm) between the flooring and the wall or other fixed objects / moldings.

- To attach your second panel, insert the end tongue of the panel into the end groove of the first panel at a 45 angel. Lower the panel flat to the floor. Line up edges carefully. **Diagram 4.**
- Continue connecting the first row until you reach the last full panel. Fit the last panel by rotating the panel 180 with the pattern side upward, place beside row, mark and saw off excess. Attach as described above. **Diagram 5.**
- When using a handsaw cut on the decorative surface. If you use a jig or circular saw cut with the decorative side down to avoid chipping. **Diagram 6.**
- Begin the next row with the off cut piece from the previous row to stagger the pattern. Pieces should be a minimum of 8"(20cm) long and joint offset should be at least 16"(40cm). **Diagram 7.**
- To start your second row, Push the side tongue of the panel into the side groove of the very first panel at about 45°. When lowered, the plank will click into place. **Diagram 8.**
- Attach the second panel of the new row on the long side as described above. Push this panel as close as possible to the previous row. To attach this second panel to the previous panel, tap the end using a tapping block and rubber mallet. Continue along in the same fashion. **Diagram 9/10.**
- To fit the last row, lay a panel on top of the previous row. With the tongue to the wall, lay another panel upside down on the one to be measured and use it as a ruler. Don't forget to allow room for spacers. Cut the panel and attach into position. **Diagram 11.**
- Door frames and heating vents also require expansion room. First cut the panel to the correct length. Then place the cut panel next to its actual position and use a ruler to measure the areas to be cut out and mark them. Cut out the marked points allowing the necessary expansion distance on each side. **Diagram 12.**
- You can trim door frames by turning a panel upside down and using a handsaw to cut away the necessary height so that panels slide easily under the frames. **Diagram 13.**
- Remove spacers and you are ready to install finishing molding.

FINISHING MOLDING

The entire perimeter of the installation must be sealed with 3/8" PE Foam Backer Rod and 100% silicone sealant in accordance with the installation instructions. DO NOT use acrylic sealant. First fill all expansion spaces with 3/8" compressible PE foam backer rod and cover with silicone sealant. Prior to installing the moldings, apply silicone sealant to the portion of the molding or transition that will contact directly with the laminate flooring surface. Install moldings and immediately wipe away any excess silicone sealant.

- U-Track is an installation method to use with T-Molding, Reducer, End-Molding and Stairnose. Position the U-Track 3/8"(9.5mm) from the edge of the flooring, Screw, nail or glue the U-Track to the subfloor then snap in molding. **Diagram 14.**
- Quarter Round is used to finish the perimeter of the room. Quarter round molding is nailed directly into the baseboard or the wall not the floor. First fill all expansion spaces with 3/8" compressible PE foam backer rod and cover with silicone sealant. Prior to installing Quarter Round, apply silicone sealant to the portion of the Quarter Round that will contact directly with the laminate flooring surface, install and immediately wipe away any excess silicone sealant. **Diagram 15.**
- T-molding is used to finish flooring when two level surfaces meet in doorways or for expansion joints. If your room is more than 30'(9.2m) wide you will need to allow for an expansion joint. Expansion joints use T-molding and can be positioned in any inconspicuous place. Position the U track 3/8" (9.5mm) from the edge of the flooring. Screw, nail or glue down the track directly to the subfloor. First fill all expansion spaces with 3/8" compressible PE foam backer rod and cover with silicone sealant, and then insert the T-Molding strip into the track. Prior to installing the moldings, apply silicone sealant to the portion of the molding or transition that will contact directly with the laminate flooring surface, install and immediately wipe away any excess silicone sealant. **Diagram 16.**
- Reducer molding is used to finish flooring when the adjoining surface is lower than the laminate flooring or

when flooring meets carpet. Position the U track 3/8" (9.5mm) between the edge of the flooring. Screw, nail or glue down the track directly to the subfloor. First fill all expansion spaces with 3/8" compressible PE foam backer rod and cover with silicone sealant, and then insert the reducer strip into the track. Prior to installing the moldings, apply silicone sealant to the portion of the molding that will contact directly with the laminate flooring surface, install and immediately wipe away any excess silicone sealant. **Diagram 17.**

- End-Molding is used when laminate flooring ends against a vertical surface and where quarter round or wall base cannot be used. Install the laminate floor up to the U-track using spacer to obtain 3/8" (9.5mm) expansion zone, Screw, nail or glue down the track directly to the subfloor. First fill all expansion spaces with 3/8" compressible PE foam backer rod and cover with silicone sealant, then Snap End-Molding into the U-track. Prior to installing the moldings, apply silicone sealant to the portion of the molding that will contact directly with the laminate flooring surface, install and immediately wipe away any excess silicone sealant. **Diagram 18.**
- Stair nose is used where laminate flooring meets a step down or landing. Install the track. Measure and cut stair nose to length, adhere the stair nose to the subfloor using a high quality adhesive, apply a 3/16" (4.76mm) bead of adhesive in serpentine pattern to the back of the stair nose, snap the stair nose into the track. Do not use the stair nose on individual stair treads. **Diagram 19.**
- Apply silicone sealant at connections to doorframes or any other fixed objects. **Diagram 20.**

MAINTENANCE AND CLEANING

- Preferable temperature should be approximately 17°-23°C (62°-73°F) with a relative humidity of 35-55%. Humidity should never be allowed to drop below 30% as this may cause gapping.
- Use a well rung out damp cloth to clean up any dirt and footprints but avoid using excessive moisture. All spills should be cleaned up immediately. Never use wax, polish or any non-approved cleaning agents as they may dull or distort the finish.
- To avoid scratches apply felt pads to your furniture legs and use only soft rubber casters. Protect high traffic areas with runners and area rugs.
- It's a good idea to save a few boards in case of accidental damage. Boards can be replaced or repaired by a flooring professional.



Water Resistant Laminate Flooring

Limited 50-Year Residential Warranty

Tecsun provides the following 50-year residential warranty to the original purchaser for as long as he or she owns the flooring: (1) the laminate surface will not wear through; (2) the floor will not stain; (3) the floor will not be damaged due to wet mopping or everyday household spills provided such topical moisture is promptly removed; (4) the joint will remain secure under normal use conditions; and (5) the laminate floor will not be damaged due to damp mopping or everyday household spills penetrating properly installed joints. Subfloor damage originating from moisture underneath the installed floor, or penetrating around the perimeter of the installation, is excluded.

This 50 year warranty is subject to the conditions described in the “Conditions” section below and does not apply if used in any commercial setting.

Limited 10-Year Light Commercial Warranty:

Tecsun provides the following 10-year light commercial warranty to the original purchaser for 10 years from the date of purchase that: 1) the laminate surface will not wear through; 2) the floor will not stain. This 10 year warranty is subject to the conditions described in the “Conditions” section below and only applies if used in one of the following light commercial areas:

Retail: Entryways, Sales Floor/Showroom, Checkout, Breakrooms, Dressing Rooms, Offices, Storage Rooms

Doctor’s Offices: Entryways, Lobbies, Waiting Rooms, Hallways, Nurses’ Stations, Offices, Breakrooms.

Hotels: Entryways, Lobbies, Hallways, Guest Rooms, Conference/Meeting Rooms, Kitchenettes, Lounges, Offices.

Offices: Entryways, Lobbies, Hallways, Offices, Conference/Meeting Rooms, Breakrooms.

Restaurants: Entryways, Lobbies, Hallways, Offices.

Educational: Entryways, Lobbies, Hallways, Offices, Classrooms, Residence Halls, Common Areas.

Multi-family Housing: Entryways, Lobbies, Common Areas, Hallways, Offices, Storage Rooms, Individual Housing Units.

Walk-off mats are required at all entryways.

The 50- year Residential Warranty and 10-Year Light Commercial Warranty are made subject to the following conditions:

1. The floor must be installed properly in accordance with Tecsun installation instructions. The instructions should be obtained through a retailer or at 877-8-Tecsun for proper installation includes, but is not limited to, the following:
 - A moisture test is required to determine if excessive moisture exists in the subfloor. Failure to demonstrate an acceptable moisture test was completed prior to installation may result in future warranty claim denial.
 - When using a calcium chloride moisture test for concrete subfloors (ASTM F1869), values must be ≤ 5 lbs/1000ft²/24hr or <80% RH with an in situ probe (ASTM F2170).
 - A 6-mil polyethylene film vapor barrier must be used over concrete subfloors.
 - A 6-mil polyethylene film vapor barrier is required over wood subfloors.
 - Install a single layer of underlayment of Tecsun green foam for laminate floors.
 - Seal the perimeter with 100% silicone sealant. All expansion spaces must be filled with 3/8" compressible PE foam backer rod and covered with 100% silicone sealant. Apply 100% silicone sealant to all moldings at the point of contact with the flooring surface. Apply silicone sealant at all connections to door frames or any other fixed objects.
 - Failure to fully engage the locking system around all sides of each plank during installation could result in gaps that will void this limited warranty.
2. The flooring must be used only indoors in a dry, climate-controlled area.
3. The flooring must be maintained in accordance with Tecsun care and maintenance instructions. Damage resulting from excessively wet maintenance or from using detergents, abrasive cleaners, soaps, waxes or polishes is not covered by this warranty.
4. Damage must not have occurred as a result of improper or inadequate maintenance or accidents, such as damage caused by scratching, impact or cutting. Damage resulting from the use of rotating beater bars, floor scrubbers, jet mops, steamers, buffers or similar products is not covered by this limited warranty.
5. Surface wear must be readily visible (i.e. approximately 1 square inch). Gloss or sheen changes and variations from later product additions or non-warranty repairs are not covered by this warranty.
6. These warranties do NOT apply to moisture damage caused by events beyond everyday household spills, including but not limited to flooding, standing water, leaking pipes, mechanical failures or appliance leaks.
7. These warranties do NOT apply to damage caused by water or moisture originating from within the subfloor or underneath the flooring, including but not limited to damage from subfloor hydrostatic pressure (water or moisture under the floor that is transmitted to the surface through exerted pressure) or other conditions that result in water or moisture being below the floor.
8. These warranties do NOT apply to flooring installed on a concrete subfloor unless a nonrecycled (100% virgin resin) 6-mil polyethylene film vapor barrier with a density of 0.92 lbs/cubic foot and a thickness tolerance of +/- 10% is installed over the concrete subfloor that emits a water vapor no greater than 5 lbs/1000ft²/24-hr. When installed in accordance with the provided instructions.
9. These warranties do NOT apply to moldings.
10. Installation of flooring that contains any manufacturing defect is NOT covered by these warranties.

11. These warranties do NOT apply to any damage that occurs during shipment or installation.
12. These warranties do NOT apply to product that has been put to abnormal use or conditions or abused in any way, which includes but is not limited to moisture damage from plumbing, storms, or flooding; damage from smoke, fire or other casualty events; damage caused by negligence; improper alterations of the original manufactured product; damage from use of the flooring that is unreasonable considering the normal and expected uses of a laminate wood floor in a residential environment; or damage of mechanical nature.
13. These warranties do NOT apply to damage from extreme heat, dryness, moisture of any kind. Maintain a normal indoor relative humidity level between 35%-55% throughout the year to minimize the natural expansion/contraction of planks.
14. These warranties do NOT apply to Failure to support furniture with non-staining floor protectors. Protectors must be the same diameter of the object and rest flat on the floor.
15. These warranties do NOT apply to Conditions caused by Installations not in accordance with the Tecsun Installation guide, improper installation including installation by non-licensed individual, inadequate subflooring, including but not limited to building settling or uneven subfloor, or improper subfloor preparation.
16. These warranties do NOT apply to any noise or sound issues related to the floor (ex: squeaking, hollow sound, etc.)
17. These warranties do NOT cover our products to be installed in wet areas such as bathrooms or saunas
18. The Limited Warranties do NOT cover damage from any liquid other than water including human or pet urine. Urine is not PH neutral and will cause damage to any laminate floor.
19. The Limited Warranties do NOT cover use of two different locking systems. Locking systems change from time to time and it is the purchaser's responsibility to notify us of a continuous job that requires a certain lot number.
20. These warranties do NOT apply to any loss of time, inconvenience expenses, costs or consequential damages caused by or resulting directly or indirectly from a problem about which the claim was made.
21. These warranties do not apply to damage caused by non-compliant casters on furniture. Barrel-type caster wheels or wide, flat glides are best for protecting the floor. For areas with rolling chairs (e.g. desk area), ensure a protective mat is used under the chair.
22. This limited warranty does not apply to Tecsun moldings and trims.

How to Make Claims:

Any claim under any of these warranties above must be made by contacting your retailer within 30 days after the basis for the claim is detected. In addition, any claim under any of the warranties above must be made before the end of the applicable limited warranty period. Proof of purchase, including the date of purchase, must be presented to make a claim.

Tecsun's Responsibility:

If Tecsun accepts a claim under any of the warranties above, Tecsun will repair or replace, at its option, the affected Tecsun flooring material only. If Tecsun, in its sole discretion, determines that such repair or replacement is not reasonably achievable, Tecsun may choose to refund the purchase price of the affected flooring material at a pro-rated percentage based on the number of years from the date of purchase and remaining warranty period of the product. If the design for which a claim is made is no longer available, Tecsun will replace the affected floor materials with another Tecsun design of equal or greater value at Tecsun's discretion. If the product was professionally installed, Tecsun will cover reasonable labor costs. For residential warranty claims involving subfloor damage, Tecsun will not cover any damage to the subfloor, insulation, floor joists or other structural, mechanical or electrical components is excluded. Consequential damages, including any medical issues related to mold or mildew growth, are also excluded. On the manner in which to proceed in order to have your flooring repaired or replaced, and you must comply with such instructions within ninety (90) days after the claim is approved, or your rights under the limited warranty will be deemed waived. The above remedies are the sole and exclusive remedies for claims on this product. These warranties give you specific legal rights, and you may also have other rights which vary from state to state.

DISCLAIMERS:

Tecsun DISCLAIMS ALL OTHER EXPRESS OR IMPLIED WARRANTIES, INCLUDING ANY IMPLIED WARRANTY OF MERCHANTABILITY OR FITNESS FOR A PARTICULAR PURPOSE, WITH RESPECT TO THIS PRODUCT. Tecsun disclaims liability for incidental and consequential damages. Some states do not allow the exclusion or limitation of incidental or consequential damages, so the above limitation or exclusion may not apply to you. These warranties are not transferable. They extend only to the original end consumer. Samples, descriptions, and other information concerning the product contained in Tecsun catalogs, advertisements, or other promotional material or statements made by sales representatives or distributors are for general informational purposes only and are not binding upon Tecsun. No sales representatives or distributors shall have any authority whatsoever to establish, expand or otherwise modify Tecsun's warranties. The provisions of these limited warranties are deemed to be severable and the invalidity or unenforceability of one provision shall not affect the validity or enforceability of any other provision. These limited warranties constitute the entire agreement of the parties, and no waiver or amendment shall be valid unless in writing and signed by an authorized representative of Tecsun.

Care and Cleaning

Place felt floor protectors under the legs of moveable furniture. Chair casters should be rubber not plastic or metal. Place walk-off mats at entrances. Dust mop as primary cleaning method. Occasionally wet mop with water only, using a well wrung out mop; DO NOT pour liquid directly on floor or use an excessively wet mop that will puddle or leave moisture standing on the floor. DO NOT use detergents, abrasive cleaners, soaps, waxes or polishes. Use correct hard surface vacuum tools. DO NOT use rotating beater bars, floor scrubbers, jet mops, steamers, buffers or similar products. Wipe up spills immediately. DO NOT allow topical moisture to remain on the floor longer than necessary.

